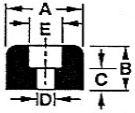


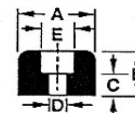
RF008 RUBBER FOOT.
 A = 1/2", B = 1/4", C = 3/32", D = 1/8", E = 1/4". \$3.00
 BLACK. PKG. OF 4.

RF008H SET OF 4 RF008 RUBBER FEET WITH MOUNTING HARDWARE. \$4.00



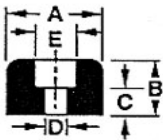
RF026 RUBBER FOOT.
 A = 1/2", B = 3/8", C = 3/16", D = 1/8", E = 1/4". \$4.00
 BLACK. PKG. OF 4.

RF026H SET OF 4 RF026 RUBBER FEET WITH MOUNTING HARDWARE. \$5.00



RF002 RUBBER FOOT.
 A = 5/8", B = 13/32", C = 5/32", D = 5/32", E = 9/32". \$3.00
 BLACK. PKG. OF 4.

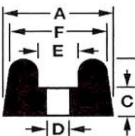
RF002H SET OF 4 RF002 RUBBER FEET WITH MOUNTING HARDWARE. \$4.00



RF003 RUBBER FOOT.
 A = 3/4", B = 9/16", C = 1/4", D = 3/16", E = 3/8". \$3.00
 BLACK. PKG. OF 4.

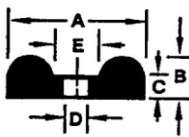
RF003H SET OF 4 RF003 RUBBER FEET WITH MOUNTING HARDWARE. \$4.00

RF003A SET OF 5 RF003 RUBBER FEET WITH MOUNTING HARDWARE. \$5.00
 FOR FORD AND VENDORAMA MACHINES.



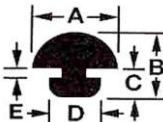
RF018 RUBBER FOOT.
 A = 1/2", B = 3/16", C = 3/32", D = 1/8", \$3.00
 E = 7/32" F = 25/64".
 BLACK. PKG. OF 4.

RF018H SET OF 4 RF018 RUBBER FEET WITH MOUNTING HARDWARE. \$4.00

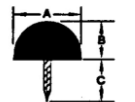


RF004 RUBBER FOOT.
 A = 7/8", B = 13/32", C = 7/32", D = 3/16", E = 3/8". \$3.00
 BLACK. PKG. OF 4.

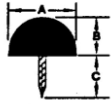
RF004H SET OF 4 RF004 RUBBER FEET WITH MOUNTING HARDWARE. \$4.00



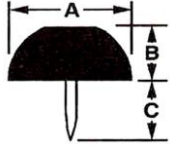
RF017 RUBBER FOOT.
 A = 3/8", B = 3/8", C = 3/16", D = 9/32", E = 9/32". \$3.00
 BLACK. PKG. OF 4.



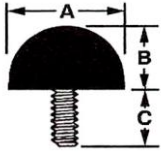
RF028 TACK BUMPER. ROUND HEAD WITH .047" DIA. TACK.
 A = 3/8", B = 1/4", C = 3/8". \$3.00
 BLACK. PKG. OF 4.



RF005 TACK BUMPER. ROUND HEAD WITH .047" DIA. TACK.
A = 1/2", B = 5/16", C = 3/8".
BLACK. PKG. OF 4. \$3.00



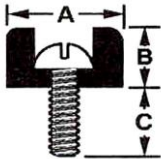
RF019 TACK BUMPER. ROUND HEAD W/ FLAT TOP, .063" DIA. TACK.
A = 3/4", B = 3/8", C = 3/8".
BLACK. PKG. OF 4. \$4.00



RF020 RUBBER FOOT WITH MOLDED IN 6-32 MACHINE SCREW.
A = 7/16", B = 1/4", C = 1/4".
BLACK. PKG. OF 4. \$4.00

RF020H SET OF 4 RF020 RUBBER FEET WITH MOUNTING HARDWARE. \$5.00

RF020W SET OF 4 RF020 RUBBER FEET WITH WITH TEE NUTS
FOR MOUNTING IN WOOD. \$5.00



RF022 RUBBER FOOT WITH MOLDED IN 6-32 MACHINE SCREW.
A = 1/2", B = 1/4", C = 1/4".
BLACK. PKG. OF 4. \$4.00

RF022H SET OF 4 RF022 RUBBER FEET WITH MOUNTING HARDWARE. \$5.00

RF022W SET OF 4 RF022 RUBBER FEET WITH WITH TEE NUTS
FOR MOUNTING IN WOOD. \$5.00



RF024 RUBBER SUCTION CUP WITH
MOLDED IN 8-32 MACHINE SCREW.
1" DIA., 1/2" CUP HT.,
SCREW PROJECTS 1/4" ABOVE FOOT.
BLACK. PKG. OF 4. \$7.00

RF024H SET OF 4 RF024 RUBBER FEET WITH MOUNTING HARDWARE. \$8.00

RF024W SET OF 4 RF024 RUBBER FEET WITH WITH TEE NUTS
FOR MOUNTING IN WOOD. \$8.00



RF001 RUBBER SUCTION CUP WITH
MOLDED IN 8-32 MACHINE SCREW.
1 3/8" DIA., 1/2" CUP HT.,
SCREW PROJECTS 1/4" ABOVE FOOT.
BLACK. PKG. OF 4. \$7.00

RF001H SET OF 4 RF001 RUBBER FEET WITH MOUNTING HARDWARE. \$8.00

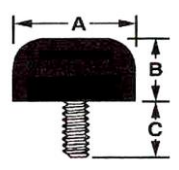
RF001W SET OF 4 RF001 RUBBER FEET WITH WITH TEE NUTS
FOR MOUNTING IN WOOD. \$8.00



RF001A SET OF 5 RF001 RUBBER FEET WITH BRASS MOUNTING HARDWARE. FOR THE FORD STYLE GUM MACHINES. \$9.00

RF001B SET OF 5 RF001 RUBBER FEET FOR VICTOR VENDORAMA. \$8.00

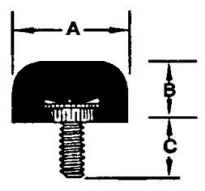
RF016 SET OF 4 SUCTION CUP RUBBER FEET FOR THE MILLS AND SEGA VEST POCKET SLOT MACHINES. \$7.00



RF021 RUBBER FOOT WITH MOLDED IN 8-32 MACHINE SCREW. A = 3/4", B = 7/16", C = 3/8". BLACK. PKG. OF 4. \$6.00

RF021H SET OF 4 RF021 RUBBER FEET WITH MOUNTING HARDWARE. \$7.00

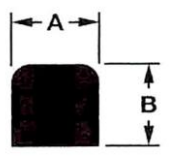
RF021W SET OF 4 RF021 RUBBER FEET WITH WITH TEE NUTS FOR MOUNTING IN WOOD. \$7.00



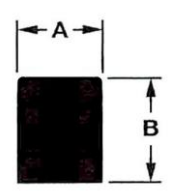
RF006 RUBBER FOOT WITH MOLDED IN 10-24 MACHINE SCREW. A = 1", B = 1/2", C = 3/8". BLACK. PKG. OF 4. \$6.00

RF006H SET OF 4 RF006 RUBBER FEET WITH MOUNTING HARDWARE. \$7.00

RF006W SET OF 4 RF006 RUBBER FEET WITH WITH TEE NUTS FOR MOUNTING IN WOOD. \$7.00



RF014 PLASTIC FOOT, FOR NORTHWESTERN 60. FACTORY ORIGINALS. A = 7/16", B = 5/8". BLACK. PKG. OF 4. \$3.00



RF023 RUBBER FOOT, FOR NORRIS MASTER. A = 1/2", B = 7/8". BLACK. PKG. OF 4. \$15.00

RF023B ECONOMY RUBBER FOOT, FOR NORRIS MASTER. A = 3/4", B = 3/4". BLACK. PKG. OF 4. \$8.00

RF029 RUBBER FOOT, FOR LOG CABIN PEANUT MACHINE. A = 1/2", B = 3/4". BLACK. PKG. OF 4. \$15.00

RFKIT 16 DIFFERENT TYPES OF RUBBER FEET WITH HARDWARE IN A STORAGE CASE. OVER \$156.00 RETAIL VALUE! \$94.95

ADD \$7.00 SHIPPING AND HANDLING PER ORDER.